



6047.06 & 6047.06/LP

Pump or Remote Mounted Control Unit

The 6047-06 & 6047.06/LP are pump or remote mounted control units. They have right angle entry from the main body to the adjustable pressure regulator for smoother operation and longer life. They include a manual dump valve, two (2) 1/2" ball valve discharge ports, and pressure gauge.

Liquid handling parts are black anodized aluminum, stainless steel, and glass-filled nylon.

The 6047.06 is standard on KAPPA-75 & KAPPA-100 pumps,

The 6047.06/LP is fitted with a lighter spring and gauge for lower pressure applications and is recommended for RO-70 pumps.



SPECIFICATIONS

Maximum Flow	26 GPM
Maximum Pressure	
6047.06	560 PSI
6047.06/LP	350 PSI
Discharge Ports	
Standard	(2) 1/2" Ball Valve
Optional	3/4" FNPT (part # 207P-12)
Dimensions	L-8" x W-3" x H-9.5"
Weight	5 lbs.

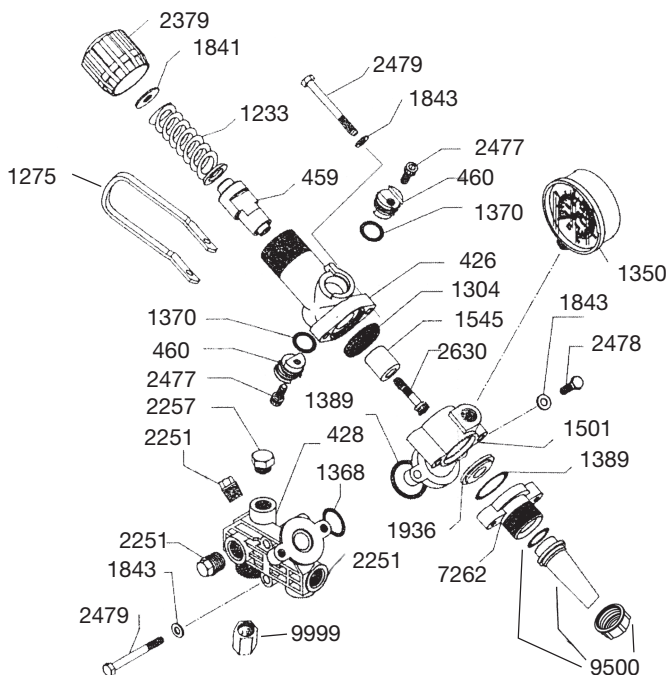
NOTE - Protect pumps from freezing. If freezing conditions exist, flush pump and system with a 50/50 mixture of antifreeze and water.

6047.06 & 6047.06/LP



6047.06-IND Control Unit

Operating Instructions and Parts List



REF#	PART#	DESCRIPTION	QTY	REF#	PART#	DESCRIPTION	QTY
426	0204.40	Valve Body	1	1841	1403.06	Washer	1
428	0204.48	Main Body	1	1843	1403.07	Washer	6
459	0205.10	Valve Cylinder	1	*1936	1501.23	Seat	1
460	0205.11	Valve Cylinder Cam	2	2251	1603.02	Plug	4
1233	0901.24	Spring	1	2257	1603.14	Plug	1
1275	0902.25	Dump Valve Lever	1	2379	1801.17	Adjustment Knob	1
*1304	0903.26	Diaphragm	1	2477	1808.10	Bolt	2
1350	GG-1000	Gauge	1	2478	1804.68	Bolt	2
*1368	1101.04	O-Ring	1	2479	1804.74	Bolt	4
*1370	1101.06	O-Ring	2	*2630	1810.01	S.S. Bolt	1
1374	1101.12	O-Ring	1	7262	0508.07	Bypass Flange	1
*1389	1101.41	O-Ring	2	9500	1291.B9	3/4" Steel Bypass Barb	1
1501	1203.40	Adapter Flange	1	9999	207P-12	3/4" FNPT Outlet Port	1
*1545	1204.19	Poppet (Steel)	1				

* Parts Included in Repair Kit - #8701.02. **Note:** 8701.02 is the only repair kit to be used in this control unit.

OPERATING INSTRUCTIONS

The control unit has a manual dump valve, pressure control knob, glycerin-filled pressure gauge and one 3/4" FNPT discharge port.

1. Before operating or re-operating pump, push the manual dump valve lever (Ref. #1275) down so the pump will start at zero pressure. FAILURE TO DO SO WILL VOID THE PUMP WARRANTY.
2. Turn pressure adjustment knob (Ref. #2379) counter clockwise to relieve spring tension.
NOTE: Step 2 applies only to initial start-up, and is not necessary in daily operation of pump.
3. Start unit and let run until air is evacuated from the system, when only liquid is expelled from the bypass line.
4. Return dump valve lever (Ref. #1275) to the UP position. Open spray gun and turn the pressure adjustment knob (Ref. #2379) clockwise until desired operating pressure is achieved.

PROTECT PUMP FROM FREEZING.

If freezing conditions exist, flush pump with a 50/50 mixture of antifreeze and water.