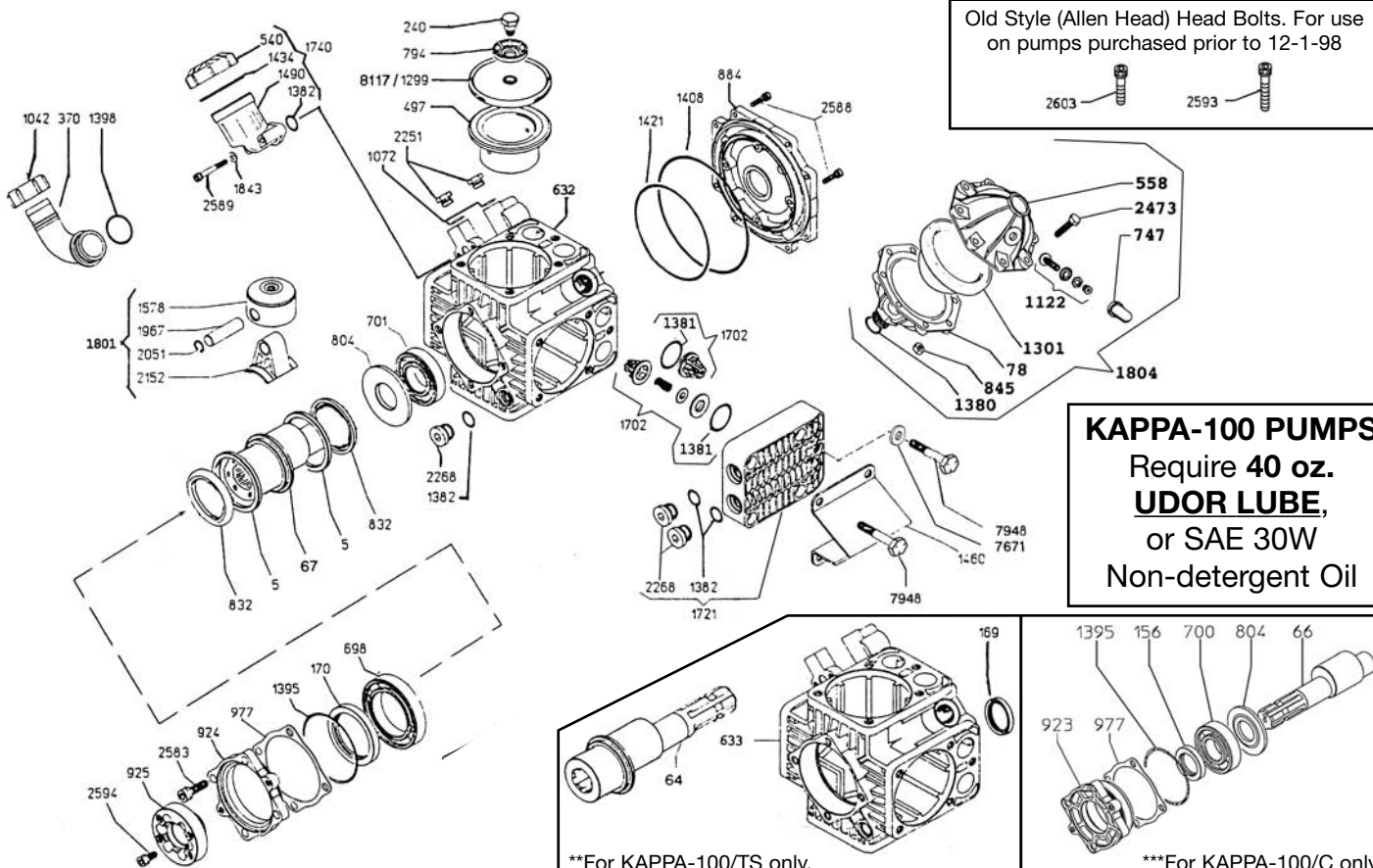




KAPPA-100 & KAPPA-100/C

Exploded View Diagram and Parts List



REF#	PART#	DESCRIPTION	QTY	REF#	PART#	DESCRIPTION	QTY
5	0001.07	Retainer Ring	2	1395	1101.48	O-Ring	1
**64	0002.53	Crankshaft (Thru-shaft)	1	1398	1101.42	O-Ring	1
***66	0002.56	Crankshaft (KAPPA-100/C)	1	1408	1101.63	O-Ring	1
67	0002.56	Crankshaft	1	1421	1101.88	O-Ring	1
78	0003.10	Pressure Accumulator Lower	1	1434	1101.D1	O-Ring	1
***156	0007.02	Shaft Seal (KAPPA-100/C)	1	1460	1202.37	Mounting Rail	2
**169	0007.26	Seal for Thru-Shaft Body	1	1490	1203.27	Oil Reservoir	1
170	0007.27	Seal	1	1578	1205.18	Piston	4
240	0102.04	Diaphragm Bolt	4	1702	6006.01	Valve Assembly	8
370	0202.78	Suction Elbow	1	1721	6017.06	Head Assembly	4
497	0206.24	Piston Sleeve	4	1740	6033.01	Oil Reservoir	1
540	0208.98	Oil Reservoir Cap	1	1801	6015.29	Piston/Rod Assembly	4
558	0208.21	Accumulator Head	1	1804	6031.02	Accumulator Assembly	1
632	0209.45	Pump Body	1	1843	1403.07	Washer	2
**633	0209.47	Pump Body - Thru-Shaft	1	1845	1403.10	Washer	6
698	0214.01	Ball Bearing	1	1967	1502.07	Connecting Rod Pin	4
***700	0214.04	Ball Bearing (KAPPA-100/C)	1	2051	1506.15	Snap Ring	8
701	0214.05	Ball Bearing	1	2152	1519.19	Connecting Rod	4
747	0218.01	Air Valve Cap Protector	1	2251	1603.02	Oil Plug	2
794	0301.14	Retainer Washer	4	2268	1603.32	Head Plug	9
804	0301.32	Spacer (2 Req'd for KAPPA-100/C)	1	2473	1804.54	Bolt	8
832	0302.51	Washer	2	2583	1805.05	Bolt	4
845	0303.01	Nut	8	2588	1805.21	Bolt	12
871	0304.04	Self-Locking Nut	2	2589	1805.31	Bolt	2
884	0501.87	Manifold Cover	1	2593	1805.14	Rail Mtg. Head Bolt (Allen Head, Old Style)	8
**923	0501.71	Flange (KAPPA-100/C)	1	2594	1805.24	Bolt	6
924	0501.69	Flange	1	2603	1805.12	Head Bolt (Allen Head, Old Style)	12
925	0501.70	Shaft Adapter	1	7671	1403.09	Washer - Head Bolt	12
977	0602.05	Gasket	1	7948	1804.45	Head Bolt - Hex Head	20
1042	0604.25	Suction Nut	1	*8117	0903.38	Piston Diaphragm (DESMOPAN)	4
1072	0605.09	Aluminum Gasket	2				
1122	0608.16	Air Valve Assembly	1				
1299	0903.13	Piston Diaphragm (BUNA-N) optional	4				
*1301	0903.16	Accumulator Diaphragm	1				
1380	1101.25	O-Ring	1				
*1381	1101.27	O-Ring	8				
1382	1101.29	O-Ring	10				

*Parts included in Diaphragm Repair Kit - #8700.24
 Diaphragm Repair Kit also available in BUNA-N - #8700.23
 **Parts for KAPPA-100/TS only.
 ***Parts for KAPPA-100/C only.



KAPPA-100 & KAPPA-100/C

Medium Pressure Diaphragm Pumps

KAPPA-100 & KAPPA-100/C medium pressure diaphragm pumps are excellent for various horticultural, agricultural, lawn care, nursery and turf spraying applications. They are also effectively utilized in other applications such as hydrostatic testing, fire fighting and cleaning. Simplicity of design and common parts allow easy and affordable maintenance. Built-in pulsation dampener, control valve and pressure gauge are standard. KAPPA-100/C pump has a 1 3/8" six spline male PTO shaft.

Several drive options are available for the KAPPA-100, including:

Part Number	Description
4155.00	Hydraulic Motor Mounting Kit
5034.B5	16 - 20 HP Gear Reduction
7751.A3	1" Solid Keyed Shaft and Bolts
7753.A6*	1-3/8" 6-Spline Male Shaft & Bolts



For industrial uses and spraying applications not listed, please consult UDOR U.S.A.

*For ALL PTO Drive Applications, Safety Shield (Part #1219.02) is Recommended.

SPECIFICATIONS

Maximum RPM	540 RPM
Maximum Flow	26 GPM
Maximum Pressure	560 PSI
Maximum Temperature	140°F
Hose Barb Ports	
In	1-1/2"
Out (Ball Valve Controlled)	1/2" (2)
Bypass-Hose Barb	3/4"
Dimensions	L-15.5" x W-16" x H-12.5"
Weight	51 lbs.
Diaphragm Material	
Standard	DESMOPAN
Optional	BUNA-N

NOTE - Protect pumps from freezing. If freezing conditions exist, flush pump and system with a 50/50 mixture of antifreeze and water.