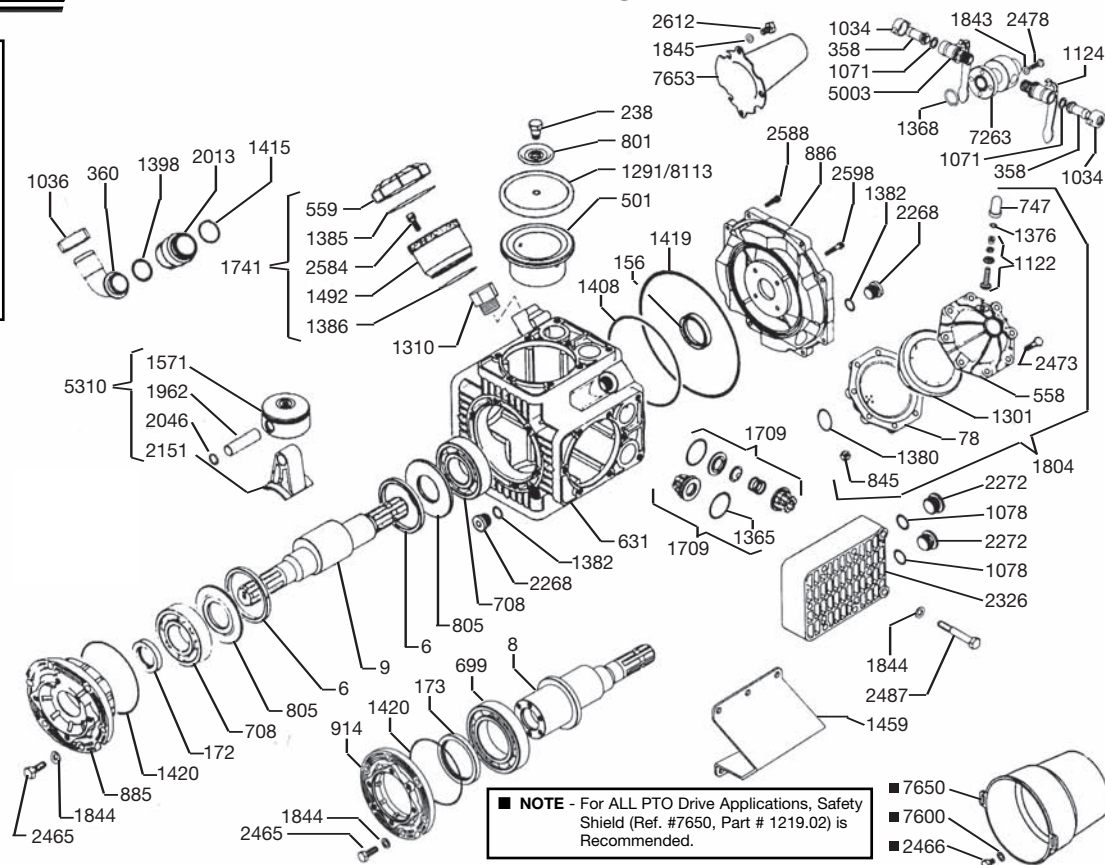




# KAPPA-120 & KAPPA-120/CC

## Exploded View Diagram and Parts List

**KAPPA-120 PUMPS**  
 Require **84 oz. UDOR LUBE,**  
 or SAE 30W  
 Non-detergent  
 Oil



**KAPPA-120 & 120/CC**

| REF#  | PART#   | DESCRIPTION                        | QTY | REF#   | PART#   | DESCRIPTION                 | QTY |
|-------|---------|------------------------------------|-----|--------|---------|-----------------------------|-----|
| 6     | 0001.08 | Retainer Ring                      | 2   | 1386   | 1101.33 | O-Ring                      | 1   |
| 8     | 0002.66 | Crankshaft (KAPPA-120)             | 1   | 1398   | 1101.42 | O-Ring                      | 1   |
| 9     | 0002.64 | Crankshaft (KAPPA-120/CC)          | 1   | 1408   | 1101.63 | O-Ring                      | 1   |
| 78    | 0003.10 | Pressure Accumulator               | 1   | 1415   | 1101.77 | O-Ring                      | 1   |
| 156   | 0007.02 | Seal                               | 1   | 1419   | 1101.80 | O-Ring                      | 1   |
| 172   | 0007.34 | Seal                               | 1   | 1420   | 1101.71 | O-Ring                      | 1   |
| 173   | 0007.35 | Seal (KAPPA-120)                   | 1   | 1459   | 1202.36 | Mounting Rails              | 2   |
| 238   | 0102.03 | Diaphragm Bolt                     | 4   | 1492   | 1203.30 | Oil Reservoir               | 1   |
| 358   | 0202.19 | Discharge Barb                     | 2   | 1569   | 1205.06 | Piston                      | 4   |
| 360   | 0202.84 | Suction Elbow                      | 1   | 1709   | 6006.08 | Valve Assembly              | 8   |
| 501   | 0206.28 | Piston Sleeve                      | 4   | 1741   | 6033.02 | Oil Reservoir Assembly      | 1   |
| 558   | 0208.21 | Accumulator Head                   | 1   | 1804   | 6031.02 | Accumulator Assembly        | 1   |
| 559   | 0208.22 | Oil Cap                            | 1   | 1843   | 1403.07 | Washer                      | 4   |
| 631   | 0209.33 | Pump Body                          | 1   | 1844   | 1403.09 | Washer                      | 26  |
| 699   | 0214.03 | Bearing (KAPPA-120)                | 2   | 1845   | 1403.10 | Washer                      | 2   |
| 708   | 0214.16 | Bearing                            | 2   | 1962   | 1502.01 | Connecting Rod Pin          | 4   |
| 747   | 0218.01 | Air Valve Cap                      | 1   | 2013   | 1504.04 | Nipple                      | 1   |
| 801   | 0301.07 | Retainer Washer                    | 4   | 2046   | 1506.02 | Snap Ring                   | 8   |
| 805   | 0301.34 | Washer                             | 2   | 2151   | 1519.24 | Connecting Rod              | 4   |
| 845   | 0303.01 | Nut                                | 8   | 2268   | 1603.32 | Body Plug                   | 2   |
| 885   | 0501.81 | Bearing Retainer (KAPPA-120/CC)    | 1   | 2272   | 1603.A3 | Head Plug Brass             | 8   |
| 886   | 0501.80 | Body Flange                        | 1   | 2326   | 1604.51 | Head                        | 4   |
| 914   | 0501.82 | Bearing Retainer (KAPPA-120)       | 1   | 2465   | 1804.03 | Bolt                        | 6   |
| 1034  | 0604.09 | Discharge Barb Nut                 | 2   | ■ 2466 | 1804.06 | Bolt                        | 2   |
| 1036  | 0604.48 | Suction Nut, Brass                 | 1   | 2473   | 1804.54 | Bolt                        | 8   |
| 1071  | 0605.05 | Gasket                             | 2   | 2478   | 1804.68 | Bolt                        | 4   |
| 1078  | 0605.42 | Aluminum Gasket                    | 8   | 2487   | 1804.25 | Bolt                        | 32  |
| 1122  | 0608.16 | Air Valve Assembly                 | 1   | 2584   | 1805.06 | Bolt                        | 3   |
| 1124  | 0608.45 | Ball Valve, Left                   | 1   | 2588   | 1805.21 | Bolt                        | 8   |
| 1291  | 0903.02 | Piston Diaphragm (BUNA-N) optional | 4   | 2598   | 1805.31 | Bolt                        | 4   |
| *1301 | 0903.16 | Accumulator Diaphragm              | 1   | 2612   | 1805.47 | Bolt                        | 2   |
| 1310  | 1001.04 | 3/4" Adapter Fitting               | 1   | 5003   | 0608.46 | Ball Valve, Right           | 1   |
| *1365 | 1101.01 | O-Ring                             | 8   | 5310   | 6015.36 | Piston/Rod Assembly         | 4   |
| 1368  | 1101.04 | O-Ring                             | 1   | 7263   | 0508.13 | Discharge Manifold          | 1   |
| 1376  | 1101.16 | O-Ring                             | 1   | ■ 7600 | 1403.36 | Washer                      | 2   |
| 1380  | 1101.25 | O-Ring                             | 1   | ■ 7650 | 1219.02 | PTO Safety Shield, optional | 1   |
| 1382  | 1101.29 | O-Ring                             | 2   | 7653   | 1219.15 | Thru-Shaft Protector        | 1   |
| 1385  | 1101.32 | O-Ring                             | 1   | *8113  | 0903.34 | Piston Diaphragm (DESMOPAN) | 4   |

\* Parts Included in Diaphragm Repair Kit - #8700.22. (Also available in Buna-N - #8700.21.)



# KAPPA-120 & KAPPA-120/CC

*High Pressure, High Volume Diaphragm Pumps*

KAPPA-120 high pressure, high volume diaphragm pumps are excellent for various horticultural and agricultural spraying applications. Simplicity of design and common parts allow easy and affordable maintenance.

Liquid handling parts are anodized aluminum, brass and stainless steel. Pulsation dampener, control valve and pressure gauge are standard.

Splined Q2 bushing is available for pulley drive applications.

For industrial uses and spraying applications not listed, please consult UDOR U.S.A.

For all PTO drive applications, safety shield Part # 1219.02 is recommended.

For Thrushaft protection, part # 1219.15 is recommended.



## SPECIFICATIONS

|                           |                                |
|---------------------------|--------------------------------|
| Maximum Flow .....        | 35 GPM                         |
| Maximum Pressure.....     | 700 PSI                        |
| Maximum Pump Speed .....  | 540 RPM                        |
| Maximum Temperature ..... | 140°F                          |
| Ports                     |                                |
| Inlet .....               | 1-1/2" Hose Barb               |
| Discharge .....           | 3/4" FNPT & (2) 1/2" Hose Barb |
| Bypass .....              | 1" Hose Barb                   |
| Dimensions                |                                |
| KAPPA-120/CC .....        | L-14" x W-19" x H-16.5"        |
| KAPPA-120/GR.....         | L-21.5" x W-19" x H-16.5"      |
| Weight                    |                                |
| KAPPA-120/CC .....        | 105 lbs.                       |
| KAPPA-120/GR.....         | 125 lbs.                       |
| Diaphragm Material        |                                |
| Standard.....             | DESMOPAN                       |
| Optional .....            | BUNA-N                         |

NOTE - Protect pumps from freezing. If freezing conditions exist, flush pump and system with a 50/50 mixture of antifreeze and water.

KAPPA-120 & 120/CC